

FS50 Mesh Screens

Site Installation Instructions

Tools Required

Drill
Screwdriver – for woodscrews
Socket or spanner for thru-bolts or setscrews
Silicone gun with brown, white or clear silicone

Fixings Required

No 8 x 2½ “ woodscrews and No.8 rawlplugs or
M6 x 50 setscrews

Preparation for installation

The structure of the opening must be adequate to take the weight of the screen and take appropriate fixings. The screen should fit flush with the substrate. If gaps are present due to the surface profile of the substrate these should be a maximum of 2 mm. The fixings should be a minimum of 35mm from the edge of the fixing face to prevent the structure from breaking away. If the surround has a thin metal face on top of masonry we recommend that you drill through the metal and fix in to the masonry behind.

Important: Level 1 screens must be fitted directly to the substrate.

Check size of frame and size of opening.

Offer the screen up to the opening ensuring that the screws that retain the mesh are on the inside and if necessary, level and centralise the frame in the opening by using shims or wedges. These should be to within 30mm adjacent to the fixing holes.

Using the pre-drilled holes in the frame (stepped Ø11mm to Ø7mm) mark the position of the fixings on the mounting surface. **Ensure all holes are used for Level 1 screens.**

(See below if the holes are not stepped)

The next step depends upon the type of surface that the screen needs to be secured in to:

Softwood: (Not suitable for Level 1 FS50 screens) Leave the frame in position and secure using the appropriate number of woodscrews. Greasing the screws first will help their fitting.

Hardwood: Remove the frame from the opening. Pre-drill the holes 3 mm dia. Refit the unit and secure in place with appropriate number of woodscrews.

Masonry, blockwork or concrete: Remove the frame from the opening. Pre-drill the holes 7 mm dia. Insert the Rawlplugs. Refit the unit and secure in place with appropriate number of woodscrews.

Steel: Remove the frame from the opening. Drill the holes 5 mm dia. And tap M6. Refit the unit and secure in place with appropriate number of setscrews. Where panels are to be installed side by side the appropriate frames will be supplied drilled Ø6.5mm (instead of Ø11mm) the following of fastenings will be provided, one set per hole:

Finish off by using silicone sealant to fill around the edges of the frame.

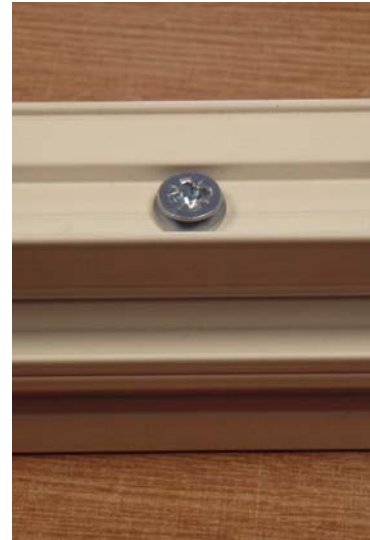
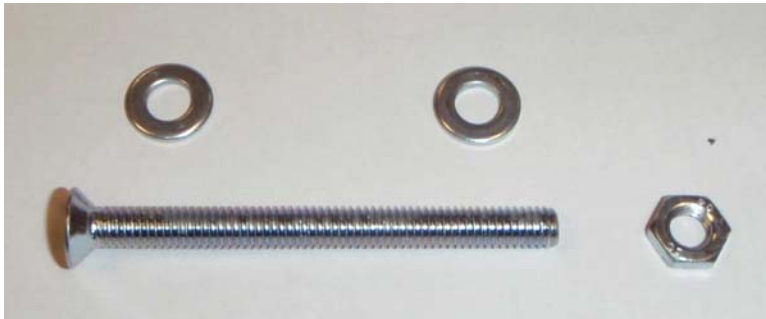
Multiple Panels (Not approved to Level 1)

Where a larger opening needs to be covered two or more panels can be fastened together using sets of the following fastenings:

1 off: GA527S0 M6x60 Pozi csk screw

1 off: WI086WS M6 ½ locknut

2 off: WI121WS M6 flat washer

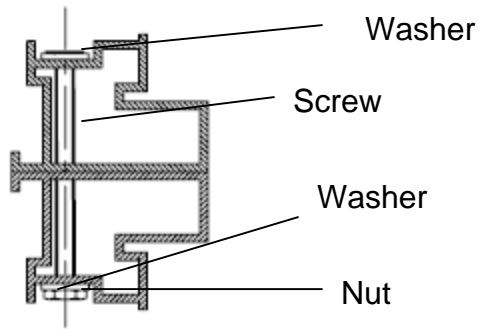


Fit the panels in place taking care to align the holes. Fasten together using the fixings by fitting a washer on the screw and locating on the hole between the two frames.

Secure using the ½ locknut and remaining washer.

Tighten the screw so that its end is approximately flush with the top face of the nut. Take care not to over tighten as this may prevent the Cover Angle from seating correctly.

The frame can be sealed with silicone if required.



Finally...

For Level 1 units only - Spoil all the wall fixing screws.

For all units - Carefully stick the four Cover Angle pieces into the frame to cover the fixing holes by first removing the protective film. The notched ones are fitted first.

