



Decor-Grille
Security

Roller Shutter

aluminium



Specification

Material

All ALUMINIUM

Curtain

40mm
Secured alternately with Polyamide end locks.

Curtain Types

SOLID - VENTED, NON VENTED

Bottom Rail

Solid rail complete with rubber seal

Guide Rail

FOUR types available - Standard 53mm x 22mm

Box

Shutter Boxes from 165mm² - rolled formed from stove enamelled aluminium sheet with 45 degree chamfer on front lower corner.

Maximum Size

Maximum width: 3.4 metres
Maximum height: a) Manual - 2.8 metres
b) Electric - 4 metres

Suggested Security Level

LOW TO MEDIUM

Application

- Internal & External
- Windows
- Doors
- Bar & Servery
- Other Heat & Sound Insulation; Shade & Light



Product
Reference
RA2



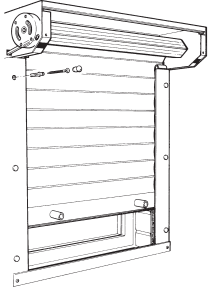
Decor-Grille Security

Roller Shutter

aluminium

Methods of Fixing

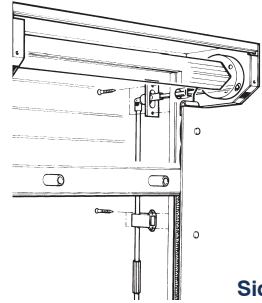
Face Fixing



To Wall
Or
To Ceiling



Reveal Fixing



To
Side Wall

Product Size Parameters

| Weight of curtain 9kg/Sq Metre | Manual | | Electric | | Electric Mor* | |
|-----------------------------------|--------|------|----------|------|---------------|------|
| | Min | Max | Min | Max | Min | Max |
| Width | 500 | 3400 | 660 | 3400 | 710 | 3400 |
| Height | 500 | 2800 | 500 | 4000 | 500 | 4000 |

*including manual override in case of power failures.

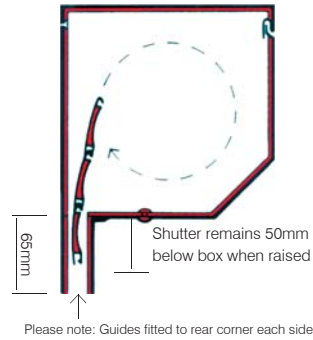
Colours

| Slat (unvented only) | White RAL 9010 | Brown RAL 8014 | Cream RAL 1015 | MED OAK WOOD |
|--|-------------------|-------------------|-------------------|--------------------|
| Shutterbox, Guide Rails & Bottom Slat | White RAL 9010 | Brown RAL 8014 | | |

Slats cannot be powder coated any other colours, box and guides are available in other colours for a surcharge.

Section Through Box Guide

Key Point 1

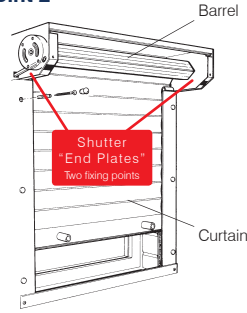


Shutter remains 50mm below box when raised

Please note: Guides fitted to rear corner each side

Shutter Assembly

Key Point 2

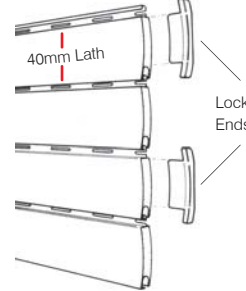


Shutter "End Plates" Two fixing points

Please note: No fixing points between each end plate
End Fixing Plate

Shutter Curtain

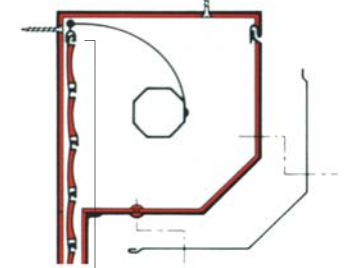
Key Point 3



Extruded Aluminium
Laths with twin wall. Provides High Security

Locking System/Box Lid

Key Point 4



Removable shutter box lid across full width of shutter access for maintenance.
Automatic Locking System

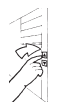
Types of Operation



Manual Spring Loaded
Only for operating on same side as shutter.



Manual Rod Crank
Enables and external shutter to be operated manually from inside.



Electric Motor & Switch
These are required on larger shutters optional on smaller shutters. Various control systems available. See separate sheet.

Guide Options

Standard Guide Rail G25 - Supplied as standard



Optional Guide Rail G30

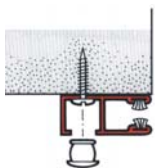


High Security Guide G40 - High security use with wind ends - locks

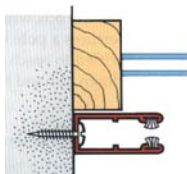


Guide Fixings

Face Fix



Reveal Fix



Optional Extras

Electric

1. Manual override - in case of power failure.
2. Manual override lock - for extra security
3. Low level manual override for ease of use when shutter is fitted internally

Manual

1. Guide rail bullet locks for extra security. To be used in conjunction with 70mm guide or above.
2. Cill angle 30 x 20 or 70 x 20.
3. Reinforced bottom slat angle/handle for extra security.
4. Removable guide rails for bar/servery with shoot bolts together with a recessed 40mm socket & dust cap.

Maximum Widths & Height for various shutter box sizes

| Max Width (mm) Including Guide Rails | Max Shutter Height (mm) Including Box | Electric Box Box Size (mm) |
|---|--|-------------------------------|
| 3400 | 200 - 1600 | 165 |
| 3400 | 1700 - 2000 | 180 |
| 3400 | 2100 - 2200 | 205 |
| 3200 | 2300 - 2400 | 250 |
| 3000 | 2500 - 2600 | 250 |
| 2600 | 2700 - 2800 | 250 |
| 2600 | 2900 - 3000 | 250 |
| 2400 | 3100 - 3200 | 250 |
| 2200 | 3400 - 3600 | 250 |
| 2000 | 3800 - 4000 | 250 |

| Max Width (mm) Including Guide Rails | Max Shutter Height (mm) Including Box | Manual Box Size (mm) |
|---|--|-------------------------|
| 3400 | 500 - 1600 | 165 |
| 3400 | 1600 - 1700 | 180 |
| 3300 | 1700 - 1800 | 180 |
| 3100 | 1800 - 1900 | 180 |
| 3000 | 1900 - 2000 | 180 |
| 2800 | 2000 - 2100 | 205 |
| 2600 | 2100 - 2300 | 205 |

Decor Grille Security, 147 Easterly Road, Leeds, LS8 2RY

Tel: 0113 248 4747

Fax: 0113 248 7858

Email: info@dgsecurity.co.uk

www.dgsecurity.co.uk